



NET-5 Polyclonal Antibody

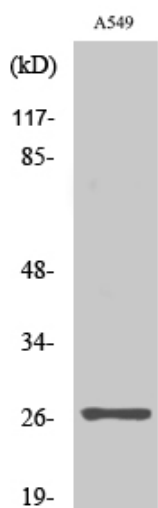
Catalog No	YP-Ab-13949
Isotype	IgG
Reactivity	Human;Mouse
Applications	WB;ELISA
Gene Name	TSPAN9
Protein Name	Tetraspanin-9
Immunogen	The antiserum was produced against synthesized peptide derived from human NET-5. AA range:72-121
Specificity	NET-5 Polyclonal Antibody detects endogenous levels of NET-5 protein.
Formulation	Liquid in PBS containing 50% glycerol, 0.5% BSA and 0.02% sodium azide.
Source	Polyclonal, Rabbit,IgG
Purification	The antibody was affinity-purified from rabbit antiserum by affinity-chromatography using epitope-specific immunogen.
Dilution	Western Blot: 1/500 - 1/2000. ELISA: 1/10000. Not yet tested in other applications.
Concentration	1 mg/ml
Purity	≥90%
Storage Stability	-20°C/1 year
Synonyms	TSPAN9; NET5; Tetraspanin-9; Tspan-9; Tetraspan NET-5
Observed Band	27kD
Cell Pathway	Membrane ; Multi-pass membrane protein . Colocalizes with GP6 in tetraspanin microdomains on the platelet surface. .
Tissue Specificity	Expressed in megakaryocytes and platelets (at protein level).
Function	PTM:Glycosylated.,similarity:Belongs to the tetraspanin (TM4SF) family.,subcellular location:Colocalizes with GP6 in tetraspanin microdomains on the platelet surface.,subunit:Found in a complex with GP6.,tissue specificity:Expressed in megakaryocytes and platelets (at protein level).,
Background	The protein encoded by this gene is a member of the transmembrane 4 superfamily, also known as the tetraspanin family. Most of these members are cell-surface proteins that are characterized by the presence of four hydrophobic domains. The proteins mediate signal transduction events that play a role in the regulation of cell development, activation, growth and motility. Alternatively spliced transcripts encoding the same protein have been identified. [provided by RefSeq, Nov 2009],
matters needing attention	Avoid repeated freezing and thawing!



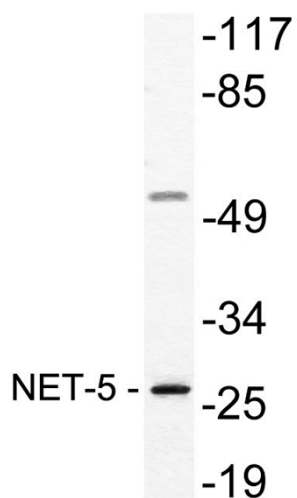
Usage suggestions

This product can be used in immunological reaction related experiments. For more information, please consult technical personnel.

Products Images



Western Blot analysis of various cells using NET-5 Polyclonal Antibody diluted at 1:2000



Western blot analysis of lysate from A549 cells, using NET-5 antibody.